



PARAGON Software GmbH

Heinrich-von-Stephan-Str. 5c ● 79100 Freiburg, Germany

Tel. +49 (0) 761 59018201 ● Fax +49 (0) 761 59018130

Internet www.paragon-software.com ● Email sales@paragon-software.com

Paragon GPT Loader

Reviewer's Guide

Product Concept

Primary Audience

3TB drives are out of the supported size range for the popular Windows XP 32-bit system. Though two new Windows versions have been released since XP, it is still utilized on 51% of computers worldwide. Meaning, roughly half of PC users simply cannot use the new hard disk drives.

The problem is caused by the fact that Windows XP 32-bit cannot address disk space beyond 2TiB limit, recognizing only 2^{32} sectors of the disk, or 2TB (2048 GB) of data. Much of the disk is not accessible if partitioned using a Master Boot Record (MBR). MBR is an old disk partitioning scheme, though still widely supported by most all computers since the 3.5 inch floppy disk era. An alternative advanced partitioning scheme exists, GUID Partition Table (GPT), which has none of the drawbacks of MBR, and supports large enough volumes for 3TB drives. However, GPT support is not as widespread as MBR and it's not supported by Windows XP.

There is a solution, however: the use of a specially designed driver, which augments Windows XP and adds the functionality of supporting the GPT partitioning scheme.

You can achieve full access to 3TB drives under Windows XP by installing Paragons GPT Loader driver. If you do not have a solution for creating GPT volumes, you can use a special utility, shipped with the driver.

Paragon GPT Loader is intended to be the best solution for Windows XP and 3TB drives users. It solves the following problems:

- Accessing all disk space of 3TB HDD from Windows XP
- Adding support of GPT volumes in Windows XP

GPT Loader addresses a broad audience:

- Home users
- IT administrators
- Service providers
- Upgrade specialists

Key differentiators of Paragon GPT Loader:

- Simplicity
- Convenience

These qualities are important for those who need a simple solution to this Windows XP drawback, but are not ready to take on complex technical tasks.

Getting Started

Recommended Target Environment

Paragon GPT Loader can operate smoothly on different computer configurations. The necessary requirements are:

- Windows XP system, and a 3TB drive
- System Administrator login privileges to install Paragon GPT Loader;

Paragon GPT Loader Installation

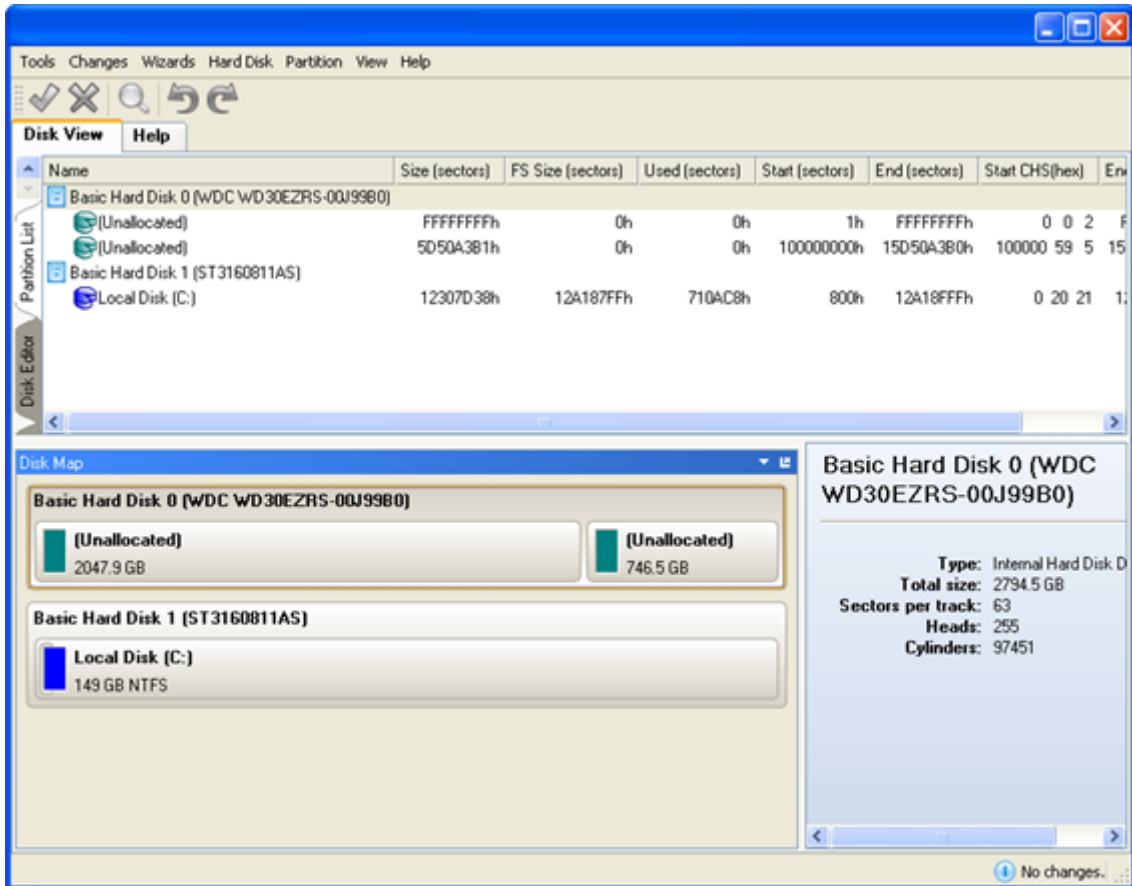
The setup utility has the standard user interface and set of installation steps.

Click “Continue Anyway” if you wish to proceed with the installation.

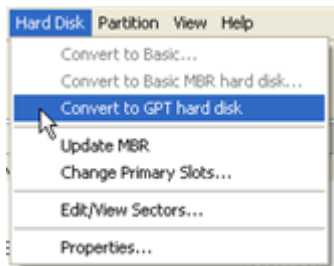


Using Paragon GPT Loader

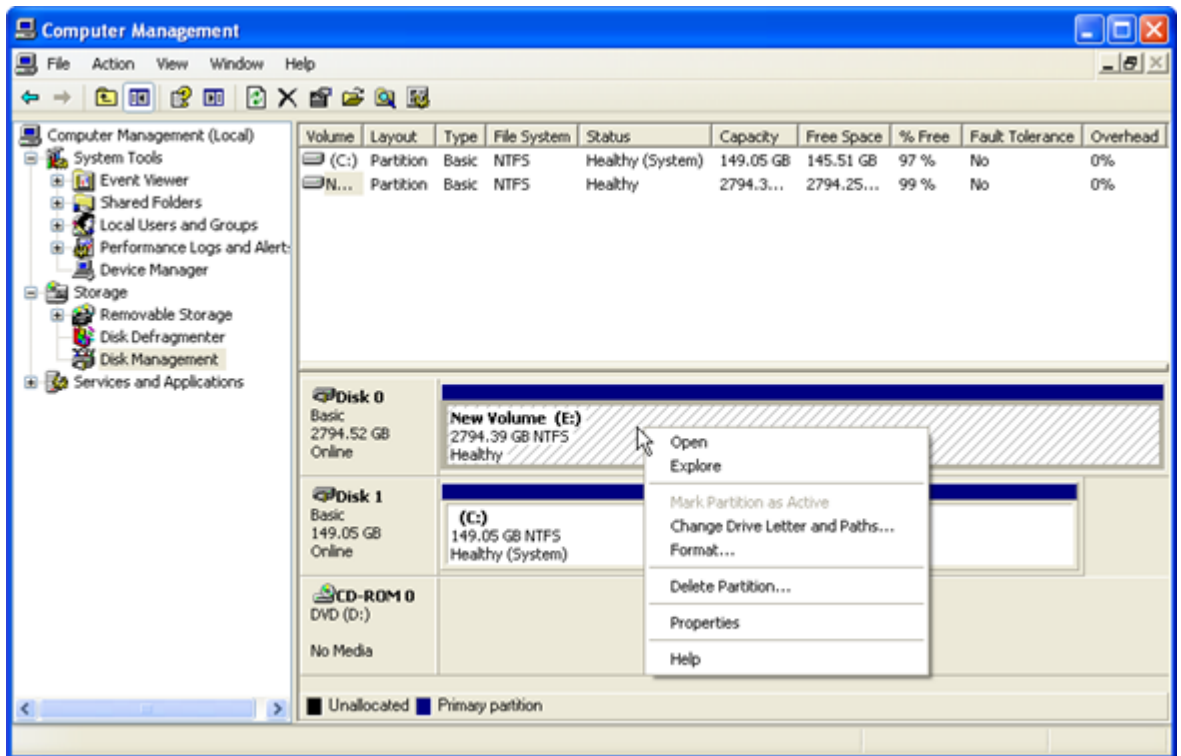
After installation, you will need to create the GPT partitioning scheme on the 3TB drive. To do this, launch the Paragon GPT Disk Manager shipped with the driver.



1. In the main program window, click the "Hard Disk" menu item.

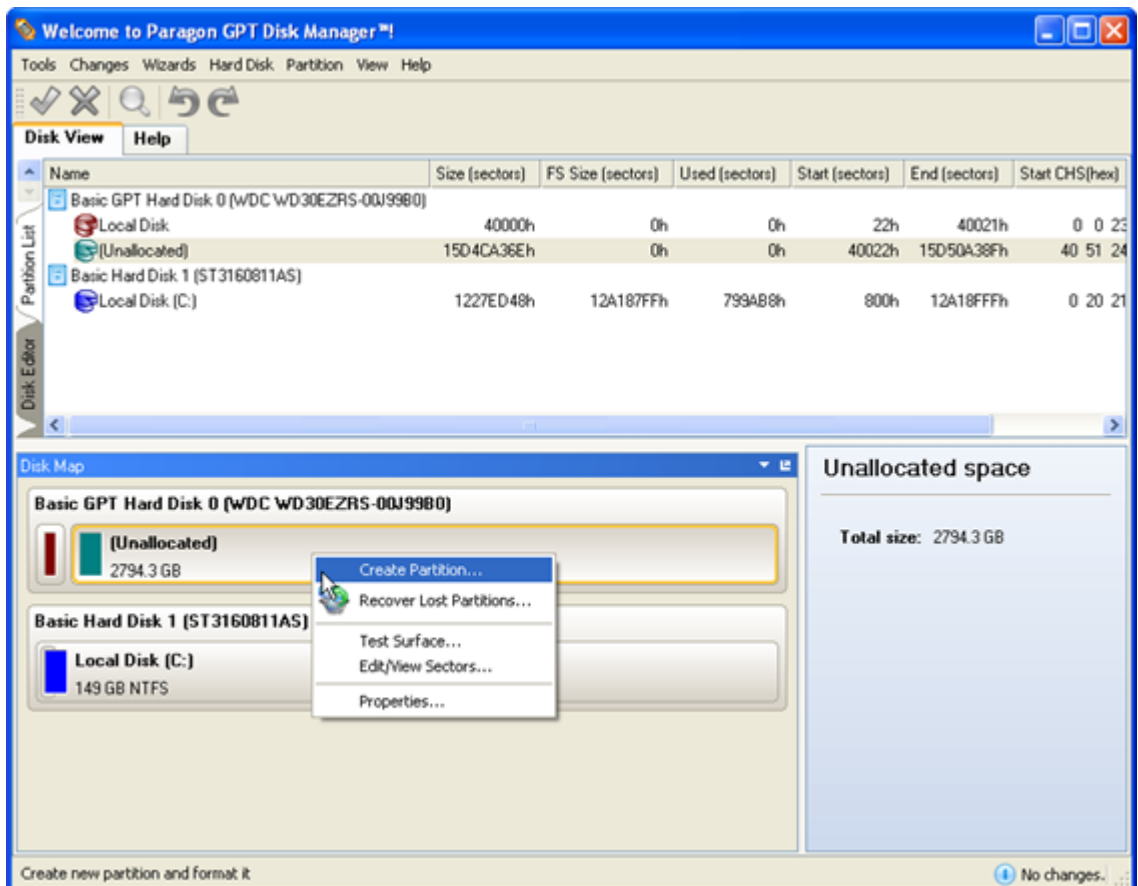


2. Select the "Convert to GPT hard disk" menu option. Perform the operation.

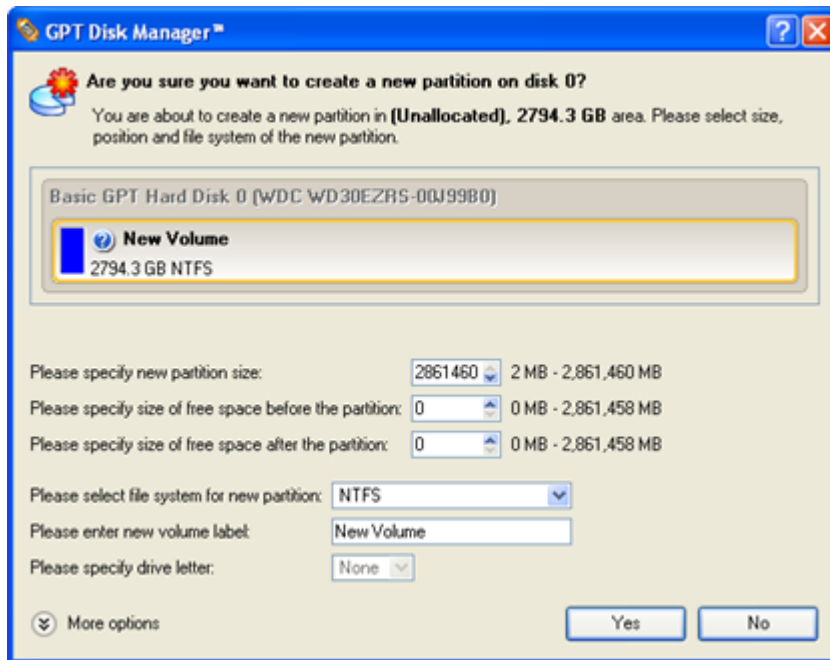


You will now have full access to your 3TB drive. For example - you can create a 3TB volume on the disk using the Windows Disk Management console, or you can use the Paragon GPT Disk Manager by following these steps:

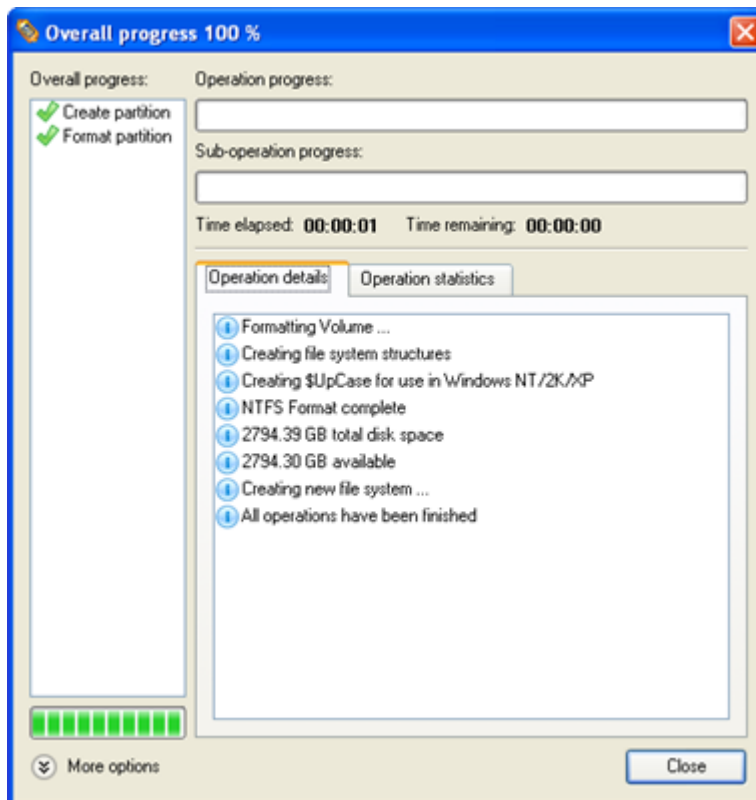
1. Run Paragon GPT Disk Manager.



2. Click the right mouse button on the free disk space on the 3TB disk. Then select the “Create Partition...” menu option on the context menu.



3. The partition creation dialog box will open where you can observe and further change the partition size, the file system type and other parameters.



4. The program creates the required volume.

Conclusion

Paragon GPT Loader is a simple solution to gain access to new high-capacity HDDs in Windows XP operating systems. Despite OS incompatibility with 3TB drives, the program bypasses them using a special driver and GPT management utility.