



PARAGON Software GmbH

Heinrich-von-Stephan-Str. 5c ● 79100 Freiburg, Germany

Tel. +49 (0) 761 59018201 ● Fax +49 (0) 761 59018130

Internet [www.paragon-software.com](http://www.paragon-software.com) ● Email [sales@paragon-software.com](mailto:sales@paragon-software.com)

---

# Paragon Migrate OS to SSD 3.0

---

*User Guide*

## Contents

<b>Introducing Paragon Migrate OS to SSD</b> .....	<b>3</b>
<b>What is Migrate OS to SSD?</b> .....	<b>3</b>
<b>What's New in Migrate OS to SSD 3.0</b> .....	<b>3</b>
<b>Product Components</b> .....	<b>3</b>
<b>Key Features</b> .....	<b>3</b>
<b>Challenges of Windows OS Migration</b> .....	<b>5</b>
<b>Getting Started</b> .....	<b>6</b>
<b>System Requirements</b> .....	<b>6</b>
<b>Installation</b> .....	<b>6</b>
<b>First Start</b> .....	<b>7</b>
<b>Obtaining WinPE Bootable Environment</b> .....	<b>7</b>
<b>Launching WinPE Environment</b> .....	<b>7</b>
<b>Using Migrate OS to SSD</b> .....	<b>9</b>
<b>Migrating Windows OS to SSD</b> .....	<b>9</b>
<b>Extra Scenarios for WinPE</b> .....	<b>12</b>
Correcting EFI parameters .....	12
Correcting the Boot Configuration Data (BCD).....	13
Adding specific drivers.....	14
Configuring network .....	15
Saving log files.....	18

## Introducing Paragon Migrate OS to SSD

This chapter will present general information on our product.

### What is Migrate OS to SSD?

Paragon Migrate OS to SSD helps to perform fast and safe Windows migrations to new storage devices (HDD or SSD) and even downsizes to smaller capacity drives, thanks to advanced data exclusion capabilities. You can transfer a live system with no impact to your work, and have your partitions automatically aligned in the process if needed. To keep up with the market demands, in this version the product's functionality has been extended by the support of the latest Windows 8 and uEFI/GPT configurations.



**Our company is constantly releasing new versions and updates to its software, that's why images shown in this manual may be different from what you see on your screen.**

---

### What's New in Migrate OS to SSD 3.0

- Support of Windows 8.
- The option to prepare a 64-bit WinPE bootable media to do migration of a 64-bit Windows 7 or later configured to the uEFI boot mode or to fix various boot problems.
- Support of the restart-free installation.

### Product Components

- **Windows™-based utility** – the primary tool for migrating OS Windows to fast solid state drives.
- **64-bit WinPE environment** – with WinPE Recovery Media Builder (WinPE RMB) you can prepare a 64-bit WinPE bootable media on a USB thumb drive. It will help you to do migration of a 64-bit Windows 7 or later configured to the uEFI boot mode. This media also contains Boot Corrector to fix most of the system boot problems that can be a result of a human factor, program error or a boot virus activity.

---

WinPE RMB can be obtained here: [www.paragon-software.com/my-account/](http://www.paragon-software.com/my-account/).



**Only the 64-bit WinPE media includes the functionality to do migration of a 64-bit Windows 7 or later configured to the uEFI boot mode.**

---

### Key Features

- Migrates Windows to larger or smaller storage devices in a single operation
- Supports any Windows since XP (including Windows 8 and Windows Server 2012)
- Migrates a 64-bit Windows configured to the uEFI-based boot mode
- Automatically aligns partitions on the destination disk if necessary
- Automatically detects and copies MSR for successful migrations of Windows 7
- Allows the user to exclude data during the process in order to fit the destination disk

- Processes locked (in-use) disks with MS VSS to migrate without rebooting Windows
- Includes Paragon's time-proven move/resize functionality
- Guarantees safety for the system and data

## Challenges of Windows OS Migration

### *Challenge #1. Windows migration from HDD to a smaller SSD*

Migrating software to outside storage devices can be a slow and painful process to the unprepared. Hard disk drives (HDD) double in capacity every two years - giving software developers lots of room for developing technology which is often more complicated and space-consuming.

To keep up with burgeoning software, users may think they are simply doomed to regular hardware upgrades involving the purchase of a new drive, and the headaches that go along with re-installing OSs and applications. Fortunately, there's a way to save time and effort by using special migration tools. Many of these tools performed well when migrating to larger drives, that is - until solid state drives (SSD) appeared on the scene.

The latest SSDs do not boast high capacity, but rather smaller size and faster processing speeds over regular hard drives. Plus, they are completely indifferent to mechanical impact, a feature crucial for mobile computers. These benefits are leading more and more users to consider migrating their OS to SSDs to get the most out of their systems. The main obstacle users are faced with is the modest capacity of SSDs for the price. So, how do you migrate an OS and hundreds of gigabytes of data on one huge volume to a SSD drive of 80-128GB? Up until now, the only solution was to re-partition the HDD first, and then perform the migration using a special utility to separate the system and data, a process which risked data loss and was quite time consuming.

### *Challenge #2. 64-bit Windows migration configured to the uEFI boot mode*

Introduced back in 2005 by Intel to lift restrictions of the old MBR (Master Boot Record) and PC BIOS (Basic Input/Output System), uEFI (Unified Extensible Firmware Interface) is now a recommended platform for new 64-bit Windows 8 computers. And the reason is easy to catch – besides other unique features impossible for the traditional tandem of BIOS+MBR, only a uEFI-based platform enables to accommodate Windows OS on a partition larger than 2.2TB.

Despite all uEFI advantages however, it has one quite naughty issue: A pretty standard operation with a bootable device for instance involving its connection to another SATA port results in unbootable Windows. You'll get the same result if trying to boot from a cloned system hard disk. All these problems originate from the way uEFI+GPT bundle is organized.

Microsoft provides how-to guides to tackle this type of problems, but they demand a great deal of experience from the user, involving the use of the **cmd**, **diskpart** and **bcdedit** tools.

### *Paragon's solution*

By developing a unique technology that transfers Windows (any version since XP) to a smaller capacity disk in a single operation, you can now simply and efficiently migrate Windows OS from a high capacity HDD to a speedy new SSD. Moreover, with the support of the uEFI/GPT configurations, you don't have to bother about any boot issues.

## Getting Started

### System Requirements

#### For the Windows installation package

- Operating systems:
  - Windows XP
  - Windows Server 2003
  - Windows Vista
  - Windows Server 2008
  - Windows 7
  - Windows Server 2008 R2
  - Windows SBS 2011
  - Windows 8
  - Windows Server 2012
- Intel Pentium CPU or its equivalent, with 300 MHz processor clock speed
- 128 MB of RAM (256+ recommended)
- Hard disk drive with 250 MB of available space
- SVGA video adapter and monitor
- Keyboard
- Mouse



During the installation additional free space will be required.

---

#### For the WinPE bootable environment

- Intel Pentium III CPU or its equivalent, with 1000 MHz processor clock speed
- At least 512 MB of RAM
- SVGA video adapter and monitor
- Keyboard
- Mouse

### Installation

Before installation, please make sure your platform [meets the minimum system requirements](#). If your computer meets these requirements, please do the following to install Migrate OS to SSD Windows installation package:

1. Click on the setup file to initiate the installation.
2. The Welcome page will inform that the application is being installed. Click **Next** to continue.

3. Please read the Paragon License Agreement carefully and then select the appropriate option to accept it. By not accepting the Paragon License Agreement you won't be able to proceed with the installation. By clicking the **Print** button, the license agreement may also be printed out.
4. **Provide Registration Information.** On the Registration page you are to provide your product key and serial number, if applicable.
5. **Provide Customer Information.** On the Customer Information page you are to provide standard information, i.e. a user name and an organization. You must also decide whether to make the program available for all users of this computer (if applicable) or only for the current user.
6. **Default Installation Path.** Click **Change** to install the utility to a different location (by default **C:\Program Files(x86)\ Paragon Software\Migrate OS to SSD 3.0 \**). Otherwise, click **Next** to continue using the default path.
7. **Install the Program.** On the Ready to Install the Program page click **Install** to start the installation or click **Back** to return to any of the previous pages to review or modify the installation settings.
8. **Installation Complete.** The Final page reports the end of the setup process. Click **Finish** to complete the wizard.

## First Start

To start Paragon Migrate OS to SSD under Windows, please click the Windows Start button and then select **Programs > Paragon Migrate OS to SSD™ 3.0 > Paragon Migrate OS to SSD™**.

## Obtaining WinPE Bootable Environment

A 64-bit WinPE-based image should be prepared on-site with Paragon's WinPE Recovery Media Builder, which you can download from Paragon's web site, the My Account section ([www.paragon-software.com/my-account/](http://www.paragon-software.com/my-account/)). To know more on the subject, please consult documentation that comes with WinPE RMB.

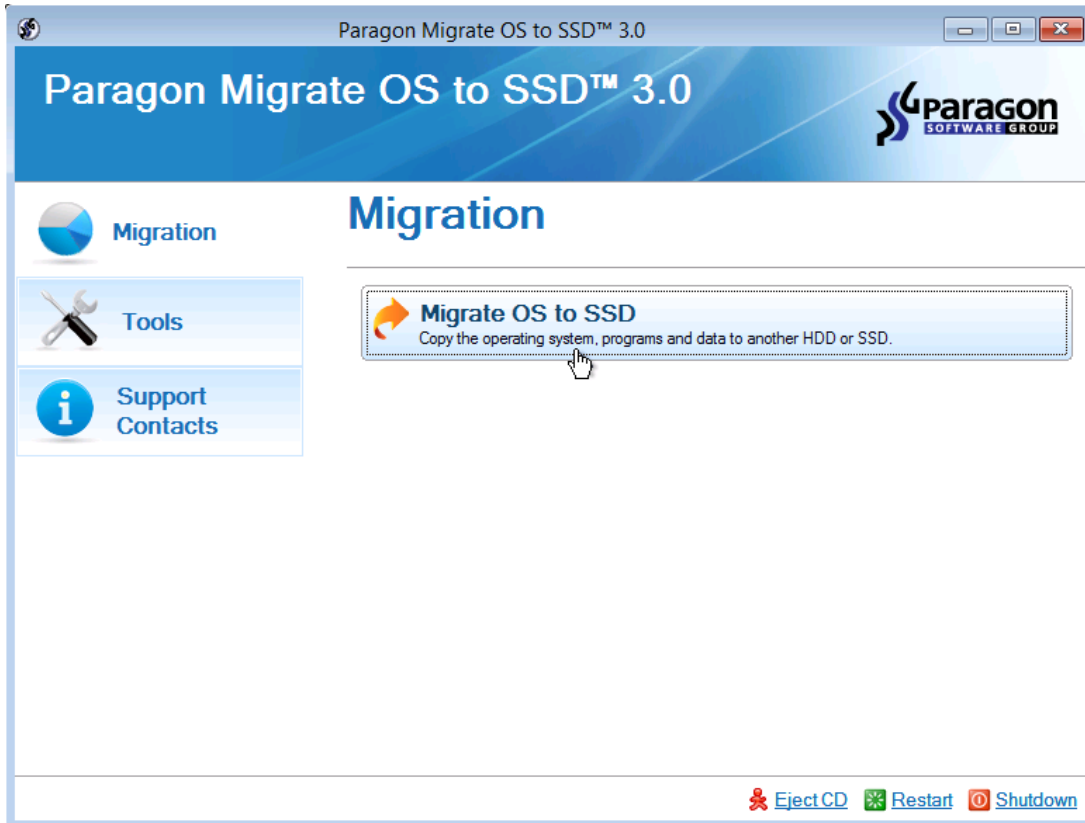


**Only the 64-bit WinPE media includes the functionality to do migration of a 64-bit Windows 7 or later configured to the uEFI boot mode.**

---

## Launching WinPE Environment

The 64-bit WinPE environment includes the Migrate OS to SSD Wizard, additionally extended by the support of the GPT/uEFI platforms, Boot Corrector, Log Saver, and Network Configurator. The WinPE environment offers an excellent hardware support and allows injecting drivers for special storage controllers and network cards.



Please consult the [Additional Options](#) section for more information.

## Using Migrate OS to SSD

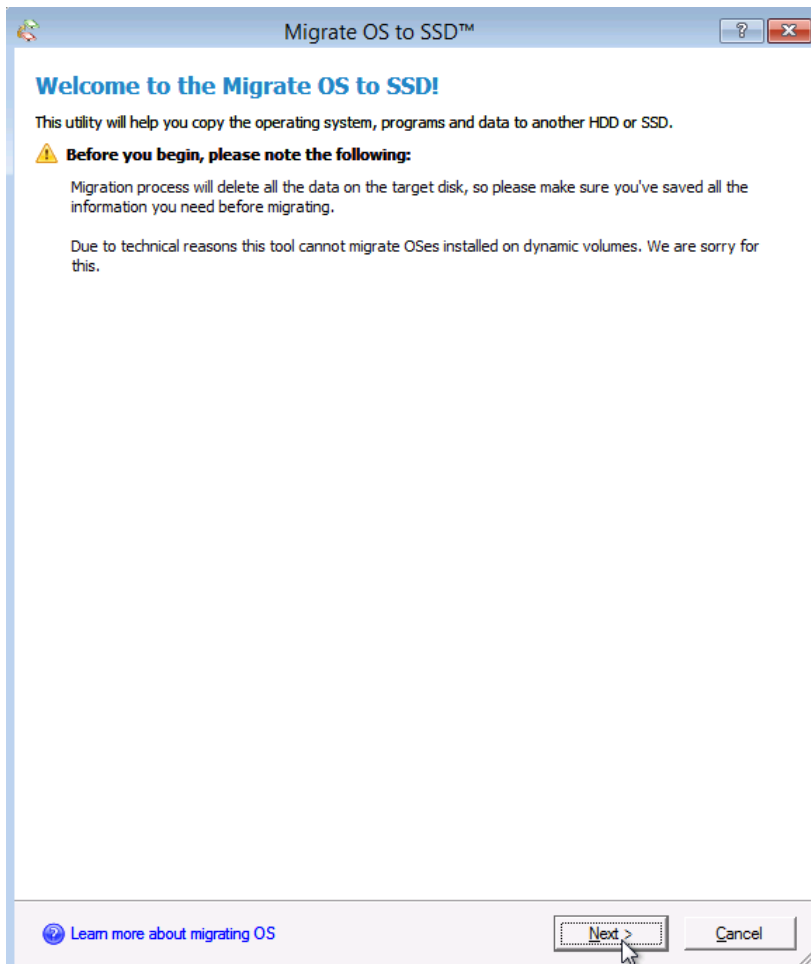
### Migrating Windows OS to SSD

The latest SSDs do not boast high capacity, but rather smaller size and faster processing speeds over regular hard drives. Plus, they are completely indifferent to mechanical impact, a feature crucial for mobile computers. These benefits are leading more and more users to consider migrating at least OS to SSDs to get the most out of their systems.

So, how do you migrate a Windows OS and hundreds of gigabytes of data on one huge volume to an SSD drive of 80-128GB? Our Migrate OS to SSD Wizard can help you do that with minimal effort.

To migrate any Windows OS since XP from a regular hard disk to a fast SSD, please do the following:

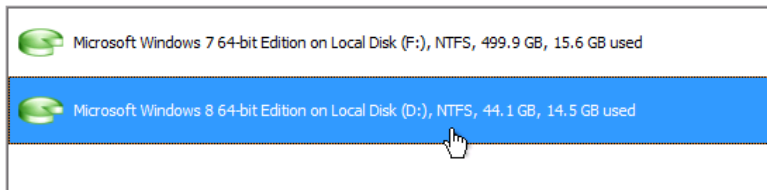
1. Connect an SSD drive to the computer.
2. Turn on the computer.
3. [Launch Migrate OS to SSD](#).
4. The first page of the wizard informs the user on the upcoming operation. Please read all notes carefully before you proceed. To get additional information on the subject, click the **Learn more about migrating OS** link at the bottom of the window (highly recommended). Once you're done with that, click **Next** to continue.



**All data stored on the destination disk will be lost during the operation. Please save it to another location beforehand.**

5. The wizard will scan your computer for system partitions that accommodate any of the supported Windows OSes. If several are found, it will let you specify which operating system you'd like to migrate.


#### Please select an OS to migrate:



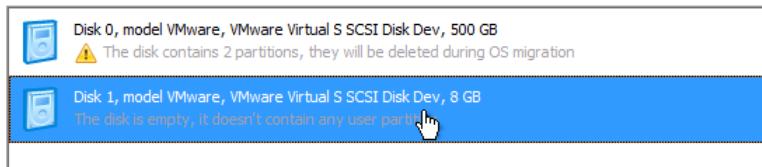
6. Depending on your choice, it will then automatically pick one or two on-disk partitions (Windows 7 may have Microsoft System Reserved, a special hidden partition that contains boot critical files, while in the uEFI+GPT mode there will be another hidden partition, called EFI System Partition) and prompt you to select a destination disk (if there are more than two drives besides the source).

#### Please select target disk:

The wizard is going to copy:

 Microsoft Windows 8 64-bit Edition on Local Disk (D:), NTFS, 44.1 GB, 14.5 GB used


To the one of the following disks:



7. If the selected disk is not enough in capacity to hold your OS (just our case) or you'd like to remove redundant data from the process, click on the corresponding link to additionally exclude files from the system partition.


#### Cannot copy OS to target disk

The wizard is going to copy:

 Microsoft Windows 8 64-bit Edition on Local Disk (D:), NTFS, 44.1 GB, 14.5 GB used, 8 GB to copy

To:

Disk 1, model VMware, VMware Virtual S SCSI Disk Dev, 8 GB

 Unfortunately, the capacity of your hard disk doesn't allow to copy the entire Local Disk (D:) partition. The wizard can copy the system, leaving aside some programs or data.

[Please select what folders should be copied](#)

Use all available space for the partition with OS

Use this option to expand the partition with OS, so it will use all available space on the disk. This option is recommended if you are not going to create other partitions on the hard disk you're migrating to.

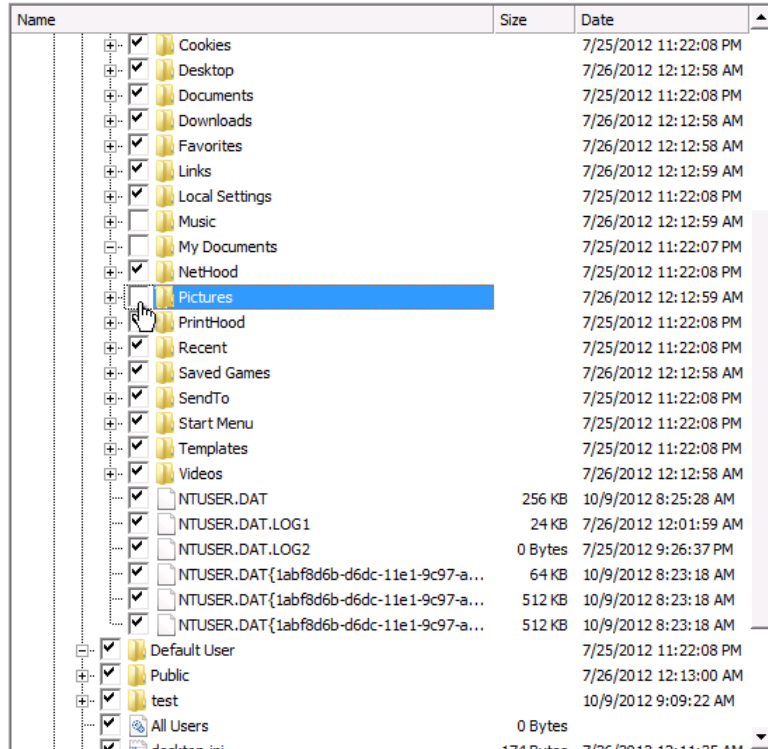
Switch EFI to boot from destination drive

Mark the checkbox to switch EFI boot entry called "Windows Boot Manager" from current Windows bootable drive to destination hard drive. Current EFI boot entry for booting Windows installed to GPT\EFI will be overwritten.

8. Unmark checkboxes opposite unnecessary files or folders to try to fit into the destination disk. We do not recommend you to exclude system files, but those that could take plenty of disk space, like video, music, photos, etc. Once you're ready with the exclusion, click **OK** to let the wizard calculate the resulted size of the partition.

### Change copy options

Please select what files and folders should be migrated along with the system:



9. If a success, you'll see a note that everything's ready to start the migration.

### Ready to copy OS to target disk

The wizard is going to copy:

Microsoft Windows 8 64-bit Edition on Local Disk (D:), NTFS, 44.1 GB, 14.5 GB used, 7.7 GB to copy

To:

Disk 1, model VMware, VMware Virtual S SCSI  
Disk Dev, 8 GB



Everything is ready now to migrate your system to the destination disk.

The target disk will have about 141.4 MB of free space after copying.

[Please select what folders should be copied](#)

10. Since we're going to use our SSD drive exclusively for Windows OS, we additionally mark the appropriate option to let the wizard expand the resulted partition across all on-disk space.

Use all available space for the partition with OS

Use this option to expand the partition with OS, so it will use all available space on the disk. This option is recommended if you are not going to create other partitions on the hard disk you're migrating to.

11. The selected source 64-bit Windows 8 is configured to the uEFI boot mode, so if we want to start up Windows from the target SSD, we need to additionally mark the appropriate option. Please note however the source disk will become unbootable after the migration is over. Anyway you can specify a bootable device at any time through [Boot Corrector](#).

Switch EFI to boot from destination drive

Mark the checkbox to switch EFI boot entry called "Windows Boot Manager" from current Windows bootable drive to destination booting hard drive. Current EFI boot entry for booting Windows installed to GPT\EFI will be overwritten.



The option above will be available for the user, only if the following conditions are met:

- The operation is accomplished through the 64-bit WinPE media;

- 
- **As a result of the operation the target disk becomes Bootable GPT.**
- 

12. Click **Copy** to initiate the migration process. When the operation is over, first check up Windows OS starts up from the target SSD. If yes, delete the Windows OS partition from the source disk, then re-partition the disk according to your needs.



This operation can also be accomplished with the WinPE bootable media.

---

## Extra Scenarios for WinPE



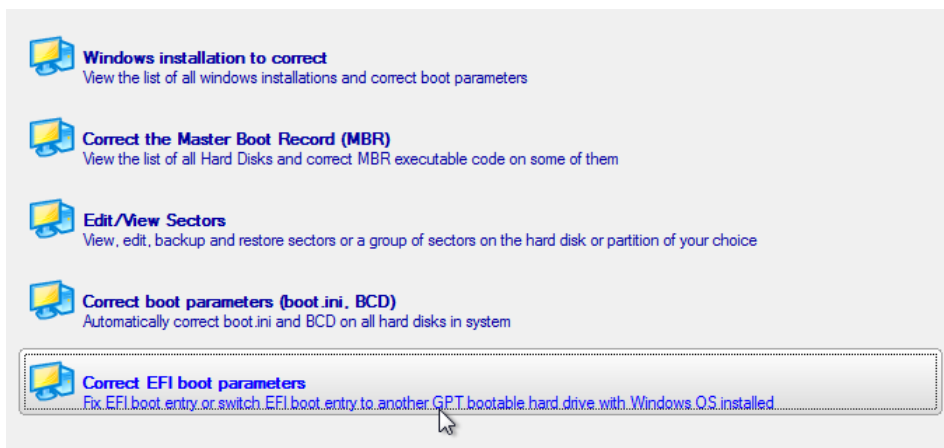
Please use WinPE Recovery Media Builder to prepare the WinPE media, which you can get here: [www.paragon-software.com/my-account/](http://www.paragon-software.com/my-account/).

---

## Correcting EFI parameters

To specify a bootable device in the EFI boot entry, please do the following:

1. [Start the computer and boot from the WinPE media.](#)
2. Select **Boot Corrector** from the start menu.
3. Click **Next** on the Wizard's Welcome page.
4. Select **Correct EFI parameters** to specify the required bootable device in the EFI boot entry.



The option above will be available for the user, only if the operation is accomplished through the 64-bit WinPE media.


---

5. The wizard will detect and list all available GPT partitions that accommodate 64-bit Windows OS. Choose the one you need to boot from, to let the wizard modify the EFI boot entry correspondingly.

The wizard has searched your computer for valid Windows installations. You can see results of the operation below. Note: The status "System" stays for a system partition, "Bootable" - for a boot partition.

<input checked="" type="checkbox"/>	<b>Microsoft Windows 8 x64</b> (Destination: Disk 1, Partition 1; Status: Bootable)
Current values: Registry volume letter : C; Partition ID: 1	
<input type="checkbox"/>	<b>Microsoft Windows 8 x64</b> (Destination: Disk 2, Partition 3; Status: Bootable)
Current values: Registry volume letter : C; Partition ID: 1	

#### 6. Confirm the operation.

 The wizard has not applied the changes yet. On this page you can either accept or reconsider the changes.

**Note:** If you accept the changes, the wizard will **physically** perform all operations. You won't be able to **interrupt this process** or **undo the changes**.

It may take some time to apply the changes. You may also be asked to restart your computer during this process.

Would you like to apply the changes?

Yes, apply the changes physically

No, let me reconsider.






#### 7. Click the **Finish** button to close **Boot Corrector**.

#### 8. Restart the computer.

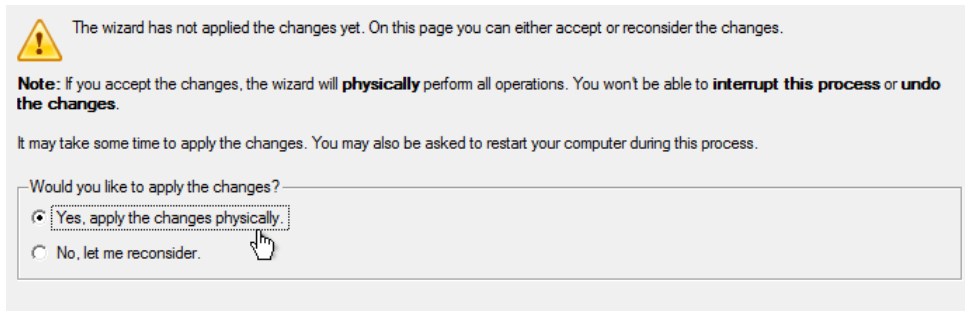
### Correcting the Boot Configuration Data (BCD)

To automatically correct the BCD of a Windows 2000+ system, please do the following:

1. [Start the computer and boot from the WinPE media.](#)
2. Select **Boot Corrector** from the start menu.
3. Click **Next** on the Wizard's Welcome page.
4. Select **Correct boot parameters...** to let the wizard fix BCD in all found Windows installations.

	<b>Windows installation to correct</b> View the list of all windows installations and correct boot parameters...
	<b>Correct the Master Boot Record (MBR)</b> View the list of all Hard Disks and correct MBR executable code on some of them
	<b>Edit/View Sectors</b> View, edit, backup and restore sectors or a group of sectors on the hard disk or partition of your choice
	<b>Correct boot parameters (boot.ini, BCD)</b> Automatically correct boot.ini and BCD on all hard disks in system
	<b>Correct EFI boot parameters</b> Fix EFI boot entry or switch EFI boot entry to another GPT bootable hard drive with Windows OS installed

#### 5. Confirm the operation.



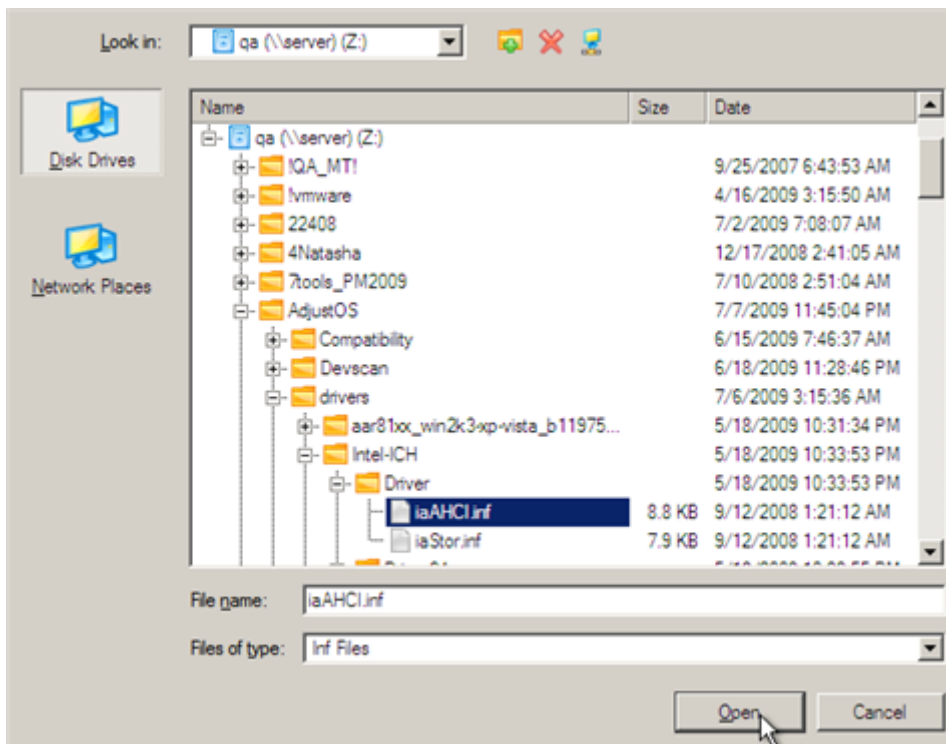
6. Click the **Finish** button to close **Boot Corrector**.
7. Restart the computer.

### Adding specific drivers

The WinPE based environment offers excellent hardware support. Anyway you've got the option to add drivers for specific hardware with a handy dialog.

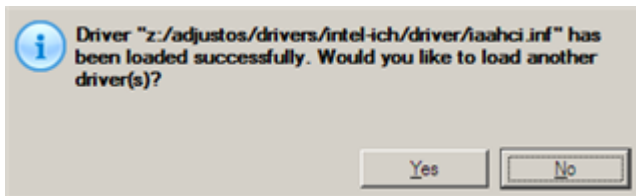
To add drivers for specific hardware, please do the following:

1. Click **Load Drivers**.
2. In the opened dialog browse for an .INF file of the required driver package located on a floppy disk, local disk, CD/DVD or a network share. Then click the **Open** button to initiate the operation



To know how to map a network share, please consult the [Configuring network](#) scenario.

3. You will be notified on the successful accomplishment of the operation. Click **Yes** to load another driver or **No** to close the dialog.

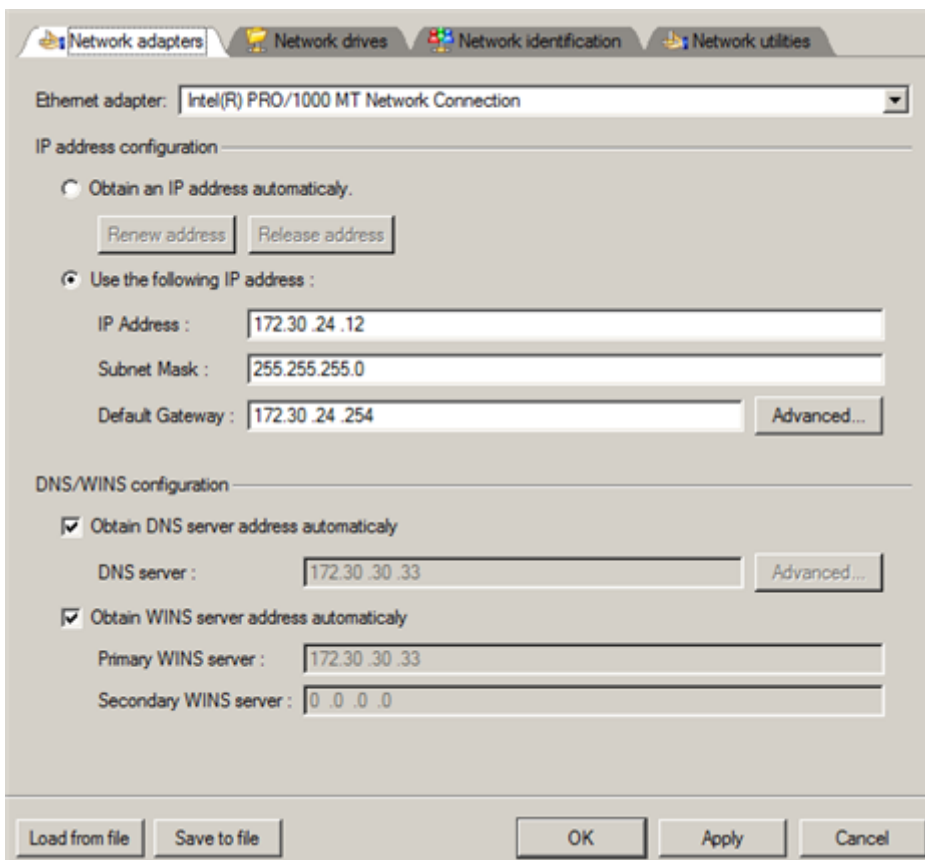


## Configuring network

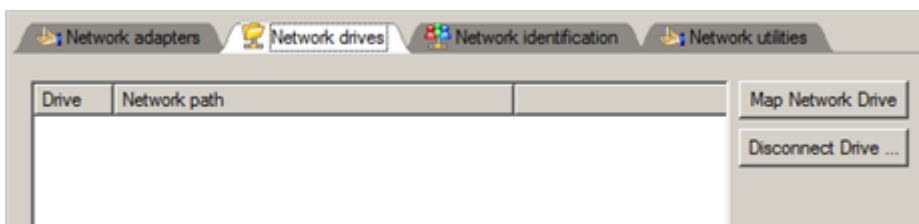
If your local network has a DHCP server, a network connection will be automatically configured once the WinPE recovery environment has been started up. Otherwise you will need to do it manually with a handy dialog by providing an IP address, a network mask, default gateway, etc. Besides with its help you can easily map network shares.

To manually set up a network connection and map a network share, please do the following:

1. Click **Configure Network**.
2. In the opened dialog provide an IP address, a network mask, default gateway, etc. for your network device.



3. Click the **Network drives** tab to map a network share.



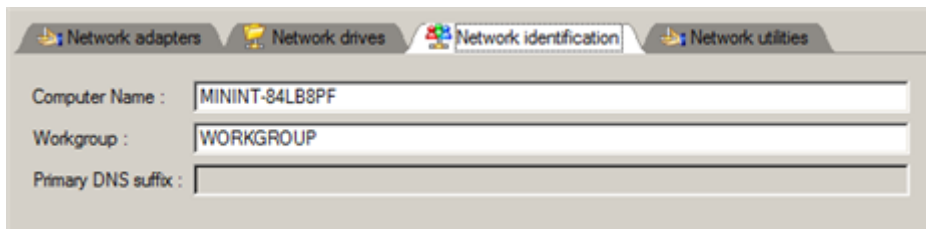
4. Click **Map Network Drive** and provide all the necessary information to map a network share in the opened dialog:



- Click the standard browse button [...] to browse for the required network share or manually enter a path to it;
- Define a letter from the pull-down list of available drive letters;
- Click the **Connect as user** button at the foot of the dialog page to specify a user name and password to access the selected network share if necessary.

By clicking **Disconnect Drive...** you can delete an existing network share if necessary.

5. Click the **Network identification** tab to change a network name of your computer (generated automatically) and a workgroup name.

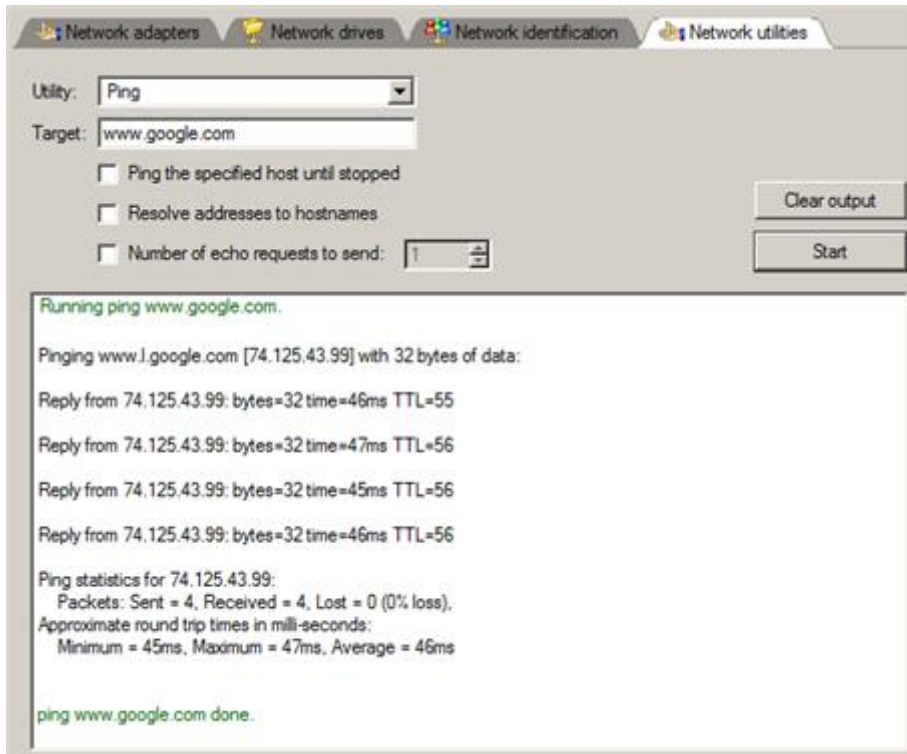


6. By default, the wizard saves all network settings in the netconf.ini file located on the WinPE RAM drive, thus it will only be available until you restart the computer. However, you can just once configure your network device and then save this file to some other destination, for instance a local drive, and this way avoid constant re-configuration, just by providing a path to it. So Click **Save to file** to save the netconfig.ini file to the required destination.

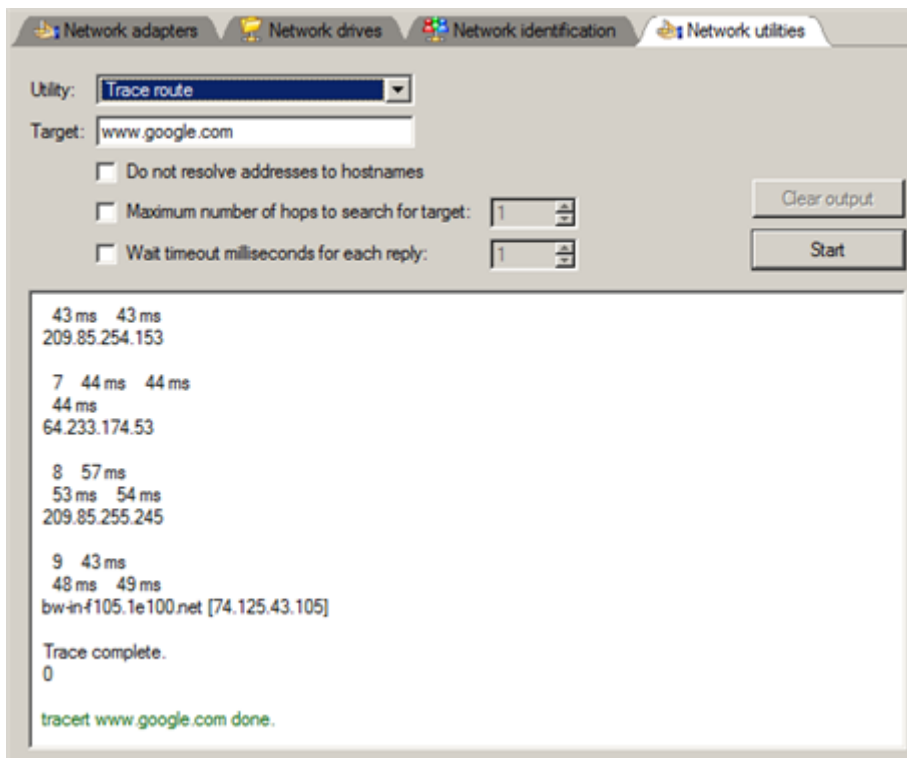
### *Network troubleshooter*

Network Configurator includes a traceroute/ping utility that enables to get detailed information on particular routes and measure transit delays of packets across an Internet Protocol (IP) network. So with its help you can easily track down problematic nodes.

1. If you need to ping some network host, please select **Ping**, then type in the required IP address or its name. Click **Start** when ready.



- **Ping the specified host until stopped.** Mark the option to ping the chosen host for indefinite time;
  - **Resolve addresses to hostnames.** Mark the option to display hostnames instead of IP addresses.
  - **Number of echo requests to send.** By default the utility sends 4 echo requests, which you can modify however.
2. If you need to trace a route to some network host, please select **Trace route**, then type in the required IP address or its name. Click **Start** when ready.



- **Do not resolve addresses to hostnames.** Mark the option to display IP addresses instead of hostnames.

- **Maximum number of hops to search for target.** By default the utility goes through maximum 30 hops when searching for the target host, which you can modify however.
- **Wait timeout milliseconds for each reply.** By default the utility waits 4 seconds for each echo reply message. If not received within the timeout, an asterisk (\*) is displayed.

### Saving log files

The program enables to simplify the procedure of sending support requests to the Paragon Support Team. In case of having difficulties with handling the program, you, with the help of this very function, can address the company support engineers and provide them with all the information they need such as the disk layout, performed operations, etc. in order to tackle the encountered problem. Information of that kind is stored in log files.

To prepare a log files package, please do the following:

1. Click **Log Saver**.
2. Provide an e-mail address used for registering the product, then give a detailed description on the encountered problem in the corresponding text fields. Please don't worry - we respect your privacy, so none of your confidential data will be exposed. This utility only collects the program's operation logs to help our Support Team find and tackle your problem. Click **Next** to continue.

**Welcome to Log Saver Wizard**

Please enter e-mail address which was used while registering this product. With its help Paragon Support Department will be able to associate your log files with your request through [on-line request system](#).

TEST\_USER@gmail.com

Please enter description of encountered issue:

The system doesn't start up after migration. Please help...

**Privacy statement**

Please note, this process collects only Paragon created log data. Paragon Software respects your privacy and does not touch personal data. All the collected information will be used for problem research and fix only in our support team.

Show privacy statement

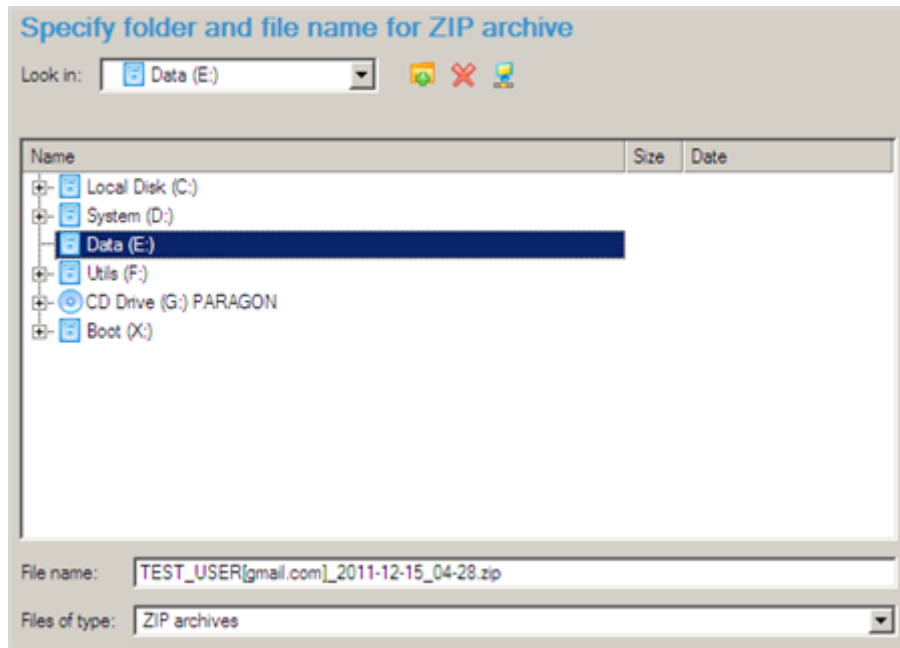
Next > Cancel



**Log files do not contain any confidential information on the operating system settings or the user documents.**

---

3. Browse for the required location of the log files package or manually provide a full path to it. Click **Save** to initiate the operation.



This function is also available under Windows.