

**Easy CD/DVD Recorder  
Reference Guide**

## CONTENTS

1	About Easy CD/DVD Recorder .....	2
2	Minimal System Requirements .....	2
3	Plain Mode .....	3
3.1	Erasing rewritable discs .....	3
3.2	Creating data discs .....	4
3.2.1	Select a burning device .....	5
3.2.2	Select files and folders to record .....	6
3.2.3	Start the operation .....	8
4	Expert Mode .....	8
4.1	Erasing rewritable discs .....	9
4.2	Creating data discs .....	10
4.2.1	File system types .....	10
4.2.2	Burning options .....	11
4.3	Creating multisession discs .....	12

## 1 About Easy CD/DVD Recorder

As appears from the program name, *Easy CD/DVD Recorder* is a program that allows to record data from a hard disk onto a compact disc in the easiest way. Actually the user can perform the record operation with three simple steps. No long lists of options. No dizzy technical terms. Everything is very easy – just three steps:

- *select the record device,*
- *select files and folder to record*
- *start the operation*

and the program will perform the data recording on your CD or DVD disc. It will use default parameters, which are optimal in most cases.

On the other hand, this simplicity helps to perform such serious operations as, for instance, the data backup of your computer. It becomes really easy with *Easy CD/DVD Recorder*. All that is needed is a CD/DVD recordable device installed on the computer with an inserted recordable compact disc. The program supports CD-R, CD-RW, DVD-R, DVD+R, DVD-RW and DVD+RW discs.

If knowledge and time allows users to set parameters of the recording process, they should select the special mode – *Expert*. This mode allows to manage the record process within wide limits. The advantages of the Expert mode are explained in [a special chapter](#).

To switch between the two modes, use the “*Expert mode*” checkbox at the foot of the first dialog of the program.

## 2 Minimal System Requirements

To use the program on your computer, make sure the system meets the following minimum system requirements:

- Operating System: Windows 98/Me/NT/2000/XP/Server 2003
- Intel Pentium CPU or its equivalent, with 300 MHz processor clock speed
- 64 MB of RAM

- Hard disk drive with 12MB of available space
- CD / DVD recoding device (IDE, SCSI and USB interfaces are supported)
- SVGA video adapter and monitor
- Mouse

### 3 Plain Mode

The program is designed in the form of a Wizard that significantly simplifies the setting of operations. Initially a user should select one of the two operations:

- *Create data disc,*
- *Erase rewritable disc.*



By click on the “Next” button the program opens a corresponding dialog window.

#### 3.1 Erasing rewritable discs

Thus if the user has a rewritable disc (CD-RW, DVD-RW or DVD+RW) and it is not blank then it can be erased by the program. Select the “Erase rewritable disc” option of the first dialog and then click the “Next” button to start the operation.



The “*Device selection*” dialog allows the user to point the recordable device where the disc is inserted into. The dialog contains the list of available CD / DVD devices and the following information on them:

- a vendor,
- a model,
- a type of inserted media,
- the size of the inserted media (in MB),
- and a label (if exists).

Select the necessary device and click the “*Next*” button to proceed.

**Please note!** A ready-to-erase disc has to be inserted into the selected device. If it is not so the program shows the appropriate warning and prevents from performing the operation.

If the Expert mode has been activated in the first dialog window, the next page will allow the user to [set some parameters of the erasing process](#). If the Expert mode has been switched off, the program starts the operation using the default values of the parameters, which are appropriate in most cases.

During the entire erasing process the program displays the following:

- the operation progress (by percentage),
- the elapsed time,
- the current operation step.



When the operation has been completed, the user returns to the initial page where the recording process can be started.

### 3.2 Creating data discs

If the user has a blank compact disc, one should select the “*Create data disc*” checkbox and then click the “*Next*” button to setup this operation. It does not take much time – just steps that are described below.



### 3.2.1 Select a burning device

The first step is selecting a device to be used to record to CD. The corresponding window of the program displays the list of all available devices. Each item on the list contains information about a recording drive, i.e.:

- its vendor,
- its model,
- the type of inserted media,
- the size of the inserted media (in MB),
- and its label (if existing).



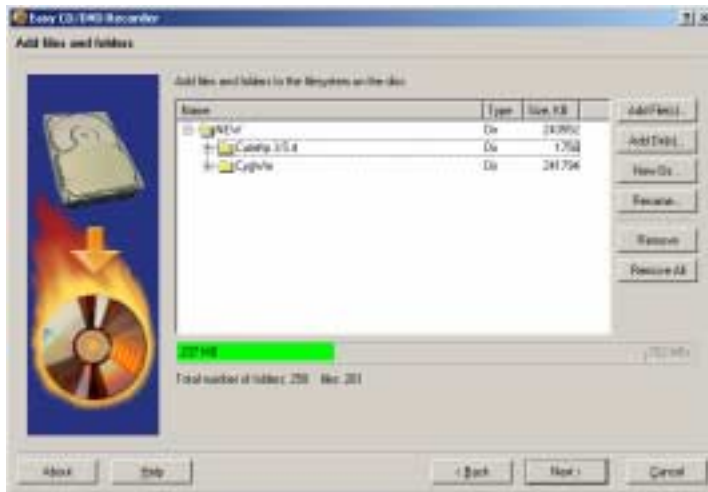
The user should select one of the devices and then click the “Next” button to proceed with the other settings.

**Please note!** A ready-to-record disc has to be inserted into the selected device. If it is not so the program shows the appropriate warning and prevents to continue setting.

**Please note!** If the disk that was inserted into the selected drive is a multisession one, then the program will import the recorded data into the new CD /DVD project automatically. The data of the previous session will be added to the current session.

### 3.2.2 Select files and folders to record

**The second step is to form the recording compact disc content.** It is necessary to select the directories and files on the local hard disk, which are to be recorded. By clicking the “*Add File(s)*” button the user opens a file browser window that allows the user to select files on a hard disk for the given compact disc project. The added files are displayed in a tree-like list which represents the future content of the compact disc.



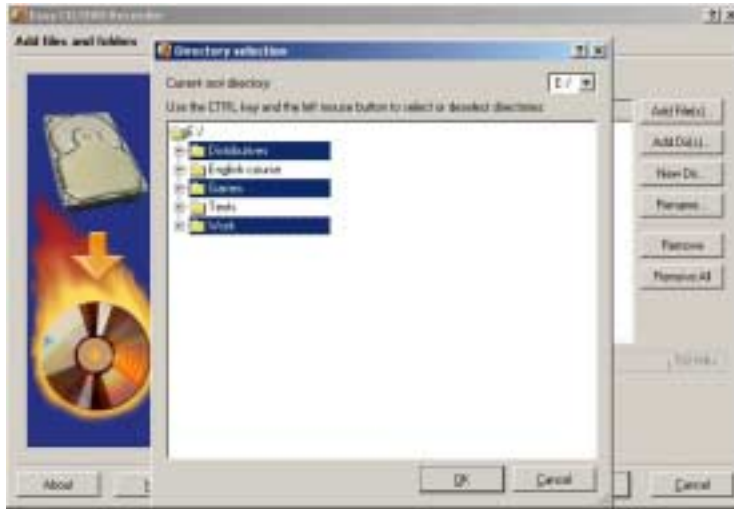
There is also the possibility to add an entire directory. Click the “*Add Dir(s)*” for that. Then, the user simply has to point a directory in the opened file browser (in this case it will display only directories of the current logical partition – please use the pull-down menu at the left corner to change a logical disk) and click the “*OK*” button.



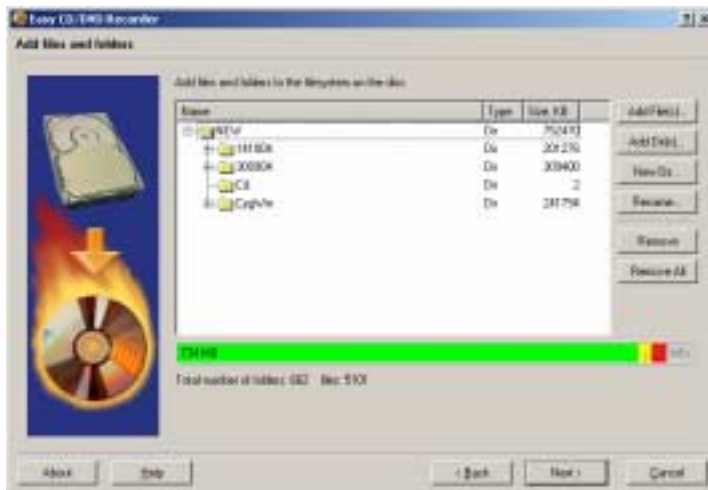
If the user needs to include some directories or some files into the project, then one should:

1. open the file browser by clicking the “*Add Dir(s)*” button (or “*Add File(s)*” in case of some files including),
2. press the “*Ctrl*” key on the computer keyboard,
3. select needed directories or files don’t releasing the “*Ctrl*” key (click a directory again to deselect it)
4. and click the “*OK*” button.

Selected directories (or files) will be immediately included into the compact disc contents.

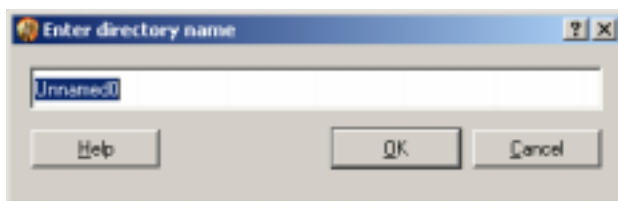


The bar at the foot of the dialog displays the volume of the used space. When the project volume exceeds the volume that is available on the user's compact disc, the corresponding part of the bar will be colored red.

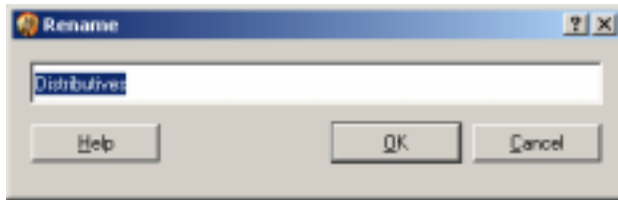


If one wants to collect files into a single directory on the compact disc:

1. click the "New Dir" button,
2. type the name of new directory in the appeared form,
3. click the "OK" button,
4. and move the files into the created directory.



The user can also rename any of the project's directories by using the "Rename" button and then by typing a new name.



When the compact disc content has been formed, click the “*Next*” button to finish the operation settings.

### 3.2.3 Start the operation

The opened “*Progress*” dialog allows to start the CD/DVD burning operation with the corresponding “*Start*” button at the foot of the window.



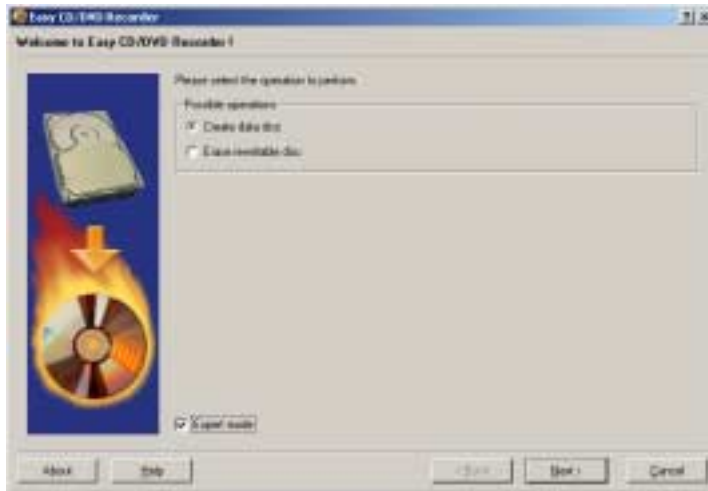
At the middle of the dialog the following information about the current operation will display:

- the operation progress (by percentage),
- the elapsed time,
- the current operation step.

By finishing, the program informs the user of a successful completing of the record process.

## 4 Expert Mode

To use the Expert mode, tick the corresponding checkbox at the foot of the program’s welcome dialog.



In this case the user will have more control of the performing operations and more control requires more knowledge. The user is advised to have clear understanding of the recording process to be able to use this mode.

When the Expert mode has been switched on, the settings of erasing and recording operations will have to offer some additional options. These options described below are available on special dialogs after selecting a recording device.

#### 4.1 Erasing rewritable discs

In case of the erasing operation the program opens the additional dialog – “Set erase options”. This dialog follows the “Device selection” dialog (see the [“Erasing rewritable discs”](#) section of the “Plain mode” chapter).



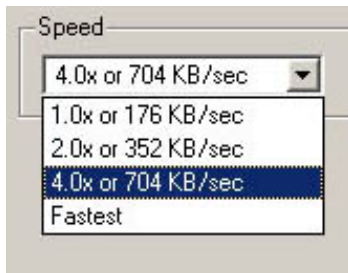
Here the user can define the following parameters:

- Whether the user wants the whole disc erased or only a TOC (a Table of Content), the two radio buttons “Erase disc in the fast way” and “Erase disc in the full way” will assist setting up one of the two erasing variants.

The fast erasing method simply erases the TOC of a disc. This procedure is relatively fast and takes only a few minutes. Fast erasing produces only good results with good equipment and "unworn" media. In case of using "worn-out" media, write errors may

accumulate on the disc. The full erase method allows to avoid similar problems and, in addition, lengthens the lifetime of an intensively used rewritable disc.

- The next checkbox “*Eject disc after performing the operation*” enables the program to automatically eject media after the erasing procedure has been completed.
- In the separate section named “*Speed*”, the user is able to set the speed for the erasing operation. This section contains a pull-down menu which displays the values of *erasing speed*. The option called “**Fastest**” automatically selects the optimal speed, taking the parameters of both drive and disc into account. The “**Fastest**” option is a default setting. In fact, the manual selection of erasing speed values is normally only necessary when using worn-out or low-quality discs.



After the described parameters setting the user should click the “*Next*” button to start the operation.

## 4.2 Creating data discs

The recording process has more parameters in comparison to the erasing process. In this case, the program shows two additional dialogs – “*File system type*” and “*Burning options*”.

**Please note!** If the disc that was inserted into the selected drive allows adding new record sessions then the program will display the supplementary dialog – “*Select track to import*”. This dialog provides the possibility to import any existing session into the new session contents. See the “[Creating multisession discs](#)” chapter for more details.

### 4.2.1 File system types

The “*File system types*” dialog follows the “[Device selection](#)” dialog – so the user defines file system parameters before the project contents forming.



The *File system type* dialog includes the two sections:

- The “*File system type*” section allows the user to select one of the next three types:
  - ISO9660 (Level 1, Level 2),
  - ISO9660 + Joliet UNICODE name extensions (Unicode characters in file and folder names),
  - UDF (Universal Disc Format)
- “*Bootable extension*” provides the possibility to make a disc bootable. For the “*Boot image*” field the user has to type the full filename and path to the image that will be used during the recording operation. One can also use the “*Browse*” button, which opens a standard file browser utility to find the image on the user’s local disk.

After setting the described above parameters, click the “*Next*” button to go to the next dialog where the user can [form the disk contents](#).

#### 4.2.2 Burning options

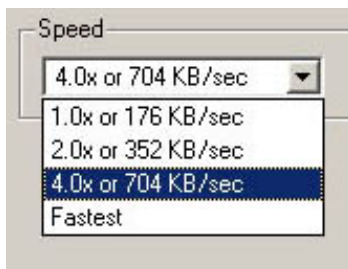
The “*Burning options*” dialog follows the “[Add files and folders](#)” dialog – so the user defines burning parameters before [starting the operation](#).



The *Burning options* page includes such parameters as:

- “*Mode*” allows the user to set one of two recording modes – “*Track-at-once*” or “*Session-at-once*”.  
 In Track-at-Once recording mode, the recording laser is switched off after completing each track, and is turned back on again when the next track is to be written. In Session-at-Once mode, all tracks (within a session) are written without switching off the recording laser.
- “*Options*” allows the user to control a set of important options:
  - “*Test mode (simulation of burning)*” – the program sends data to a CD/DVD drive in the usual manner, however, the recording laser is underpowered which means that no real writing is performed.
  - “*Create multisession disc*” – in this case the recording disc will not be closed, which normally enables additional writing to the disc.

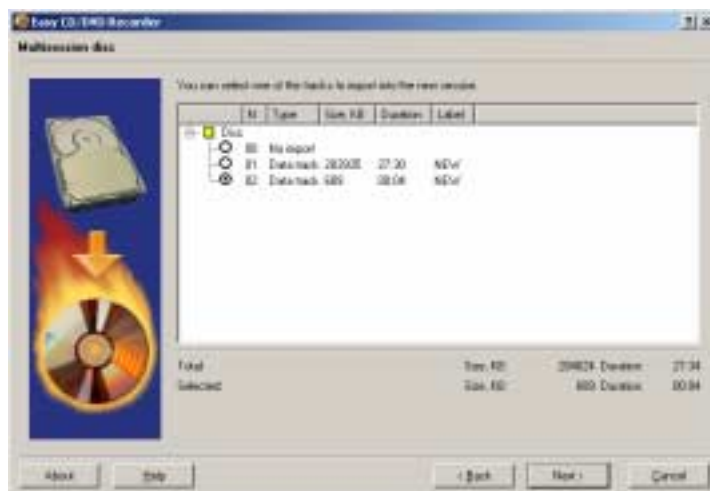
- “*Power calibration*” – the program forces the CD/DVD drive to perform a laser calibration before starting the recording process.
- “*Write raw data*” – the program writes additionally so called "servicing data", which are purposed for keeping integrity of the other information. The option is used for recording copied CD / DVD images.
- “*Write subchannel data*” – the program writes additionally subchannel data which is also used for different servicing purposes such as marking start and end of each track, saving time-codes, track type, track index and so on. The option can be helpful while recording copied CD / DVD images.
- “*Eject disc after performing the operation*” – the program automatically ejects media after completing the recording procedure.
- In the “*Speed*” section the user is able to set the speed of the recording process. This section contains a pull-down menu which displays the values for the *recording speed*. The option “**Fastest**” automatically selects the optimal speed, taking the parameters of both drive and disc into account. The “**Fastest**” option is a default setting.



After setting the described parameters, click the “*Next*” button to [start the operation](#).

### 4.3 Creating multisession discs

If the inserted disc has one or more recorded sessions and it allows to add new session then the program opens a special dialog – “*Multisession disc*”, which follows the “*Device selection*” dialog.



This dialog allows importing one of recorded sessions into the new one or creating new session separately. The table at the middle of the window displays the list of recorded sessions with mentioning of their *types*, the *size (in Kb)*, the *duration* and *labels*. Total size and

duration of the disc is displayed under the table. The left column of the table contains radio-buttons which helps the user to select a session to import. The first upper line of the list is reserved for the case when the user doesn't want to import any recorded session to the new one.

If the “*No import*” variant is selected, the user should click the “*Next*” button and [define file system type](#) for the new session. If one of recorded sessions is selected to import then the program uses the file system of the imported session for the new one and the “*Next*” button will open the “[Add files and folders](#)” dialog.